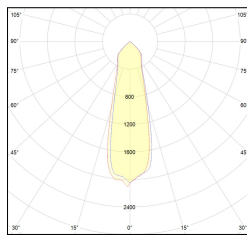
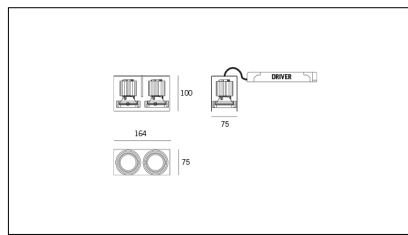
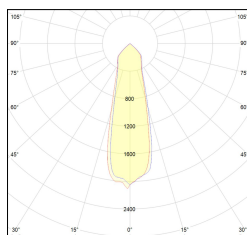
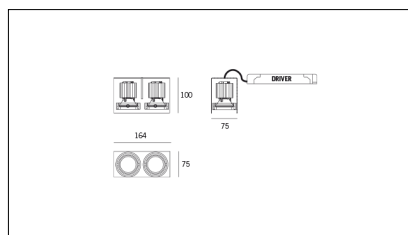


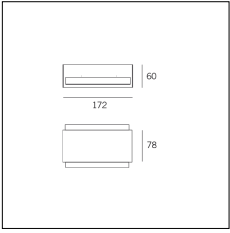
MACROLUX



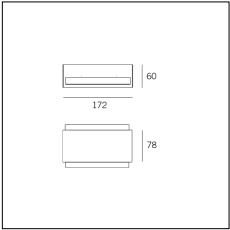
Article code	Article	Colour	Light Temperature (°K)	Type of recessed	Beam angle (°)	Watt (W)
618.0051.01.20.2	FR2/80/LED-2 6W 350mA 20°	Black (2)	3000	Plasterboard	25	12,2
618.0051.01.2700.20.2	FR2/80/LED-2 6W 350mA 20° 2700°K	Black (2)	2700	Plasterboard	25	12,2
618.0051.01.2700.40.2	FR2/80/LED-2 6W 350mA 40° 2700°K	Black (2)	2700	Plasterboard	34	12,2
618.0051.01.40.2	FR2/80/LED-2 6W 350mA 40°	Black (2)	3000	Plasterboard	34	12,2
618.0051.01.4000.20.2	*FREE	Black (2)	4000	Plasterboard	25	12,2
618.0051.01.4000.40.2	*FREE	Black (2)	4000	Plasterboard	34	12,2
618.0051.03.20.2	*FREE	Black (2)	3000	Plasterboard	25	12,2
618.0051.03.2700.20.2	*FREE	Black (2)	2700	Plasterboard	25	12,2
618.0051.03.2700.40.2	FR2/80/LED-2 6W max 350mA 40° 2700°K	Black (2)	2700	Plasterboard	34	12,2
618.0051.03.40.2	FR2/80/LED-2 6W max 350mA 40°	Black (2)	3000	Plasterboard	34	12,2
618.0051.03.4000.20.2	*FREE	Black (2)	4000	Plasterboard	25	12,2
618.0051.03.4000.40.2	*FREE	Black (2)	4000	Plasterboard	34	12,2
618.0051.09.20.2	FR2/80/LED-2 6W 350mA 20° DALI	Black (2)	3000	Plasterboard	25	12,2
618.0051.09.2700.20.2	FR2/80/LED-2 6W 350mA 25° 2700°K DALI	Black (2)	2700	Plasterboard	25	12,2
618.0051.09.2700.40.2	FR2/80/LED-2 6W 350mA 40° 2700°K DALI	Black (2)	2700	Plasterboard	34	12,2
618.0051.09.40.2	FR2/80/LED-2 6W 350mA 40° DALI	Black (2)	3000	Plasterboard	34	12,2
618.0051.09.4000.20.2	FR2/80/LED-2 6W 350mA 20° 4000°K DALI	Black (2)	4000	Plasterboard	25	12,2
618.0051.09.4000.40.2	*FREE	Black (2)	4000	Plasterboard	34	12,2



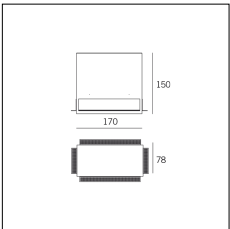
Article code	Article	Colour	Light Temperature (°K)	Type of recessed	Beam angle (°)	Watt (W)
618.0051.01.20.4	FR2/80/LED-4 6W 350mA 20°	White (4)	3000	Plasterboard	25	12,2
618.0051.01.2700.20.4	FR2/80/LED-4 6W 350mA 20° 2700°K	White (4)	2700	Plasterboard	25	12,2
618.0051.01.2700.40.4	*FREE	White (4)	2700	Plasterboard	34	12,2
618.0051.01.40.4	FR2/80/LED-4 6W 350mA 40°	White (4)	3000	Plasterboard	34	12,2
618.0051.01.4000.20.4	*FREE	White (4)	4000	Plasterboard	25	12,2
618.0051.01.4000.40.4	FR2/80/LED-4 6W 350mA 40° 4000°K	White (4)	4000	Plasterboard	34	12,2
618.0051.03.20.4	*FREE	White (4)	3000	Plasterboard	25	12,2
618.0051.03.2700.20.4	FR2/80/LED-4 6W max 350mA 20° 2700°K	White (4)	2700	Plasterboard	25	12,2
618.0051.03.2700.40.4	*FREE	White (4)	2700	Plasterboard	34	12,2
618.0051.03.40.4	FR2/80/LED-4 6W max 350mA 40°	White (4)	3000	Plasterboard	34	12,2
618.0051.03.4000.20.4	*FREE	White (4)	4000	Plasterboard	25	12,2
618.0051.03.4000.40.4	*FREE	White (4)	4000	Plasterboard	34	12,2
618.0051.09.20.4	*FREE	White (4)	3000	Plasterboard	25	12,2
618.0051.09.2700.20.4	*FREE	White (4)	2700	Plasterboard	25	12,2
618.0051.09.2700.40.4	FR2/80/LED-4 6W 350mA 40° 2700°K DALI	White (4)	2700	Plasterboard	34	12,2
618.0051.09.40.4	FR2/80/LED-4 6W 350mA 40° DALI	White (4)	3000	Plasterboard	34	12,2
618.0051.09.4000.20.4	*FREE	White (4)	4000	Plasterboard	25	12,2
618.0051.09.4000.40.4	*FREE	White (4)	4000	Plasterboard	34	12,2



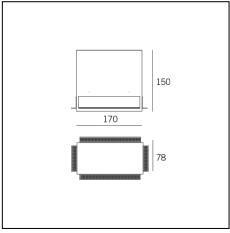
Article code	Name	Description	Colour	Type of recessed
618.0028.2	FFF2/80-2	Frame for free 2 MR struttura per l'esecuzione del foro su cartongesso - foro: 175 x 80 mm	Black (2)	Plasterboard



Article code	Name	Description	Colour	Type of recessed
618.0028.4	FFF2/80-4	Frame for free 2 MR struttura per l'esecuzione del foro su cartongesso - foro: 175 x 80 mm	White (4)	Plasterboard



Article code	Name	Description	Colour	Type of recessed
618.0022.2	FFF2/C/80-2	Frame for free 2 MR struttura per calcestruzzo e per laterizio	Black (2)	Bricks



Article code	Name	Description	Colour	Type of recessed
618.0022.4	FFF2/C/80-4	Frame for free 2 MR struttura per calcestruzzo e per laterizio	White (4)	Bricks