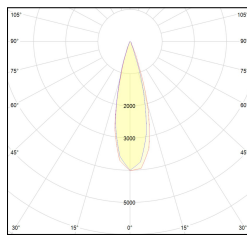
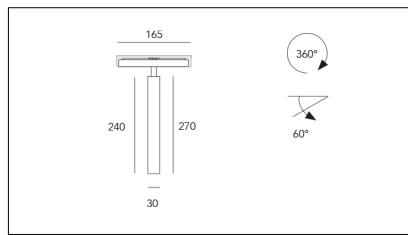
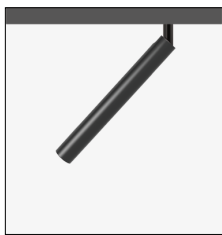
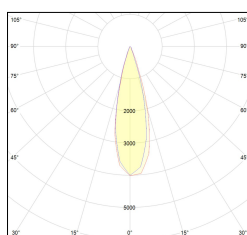
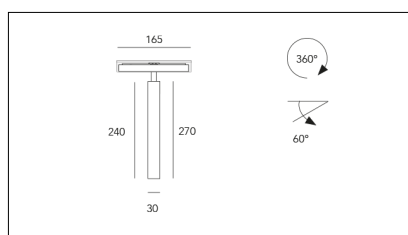


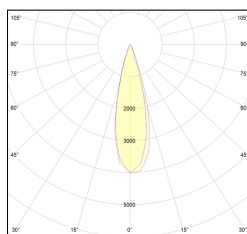
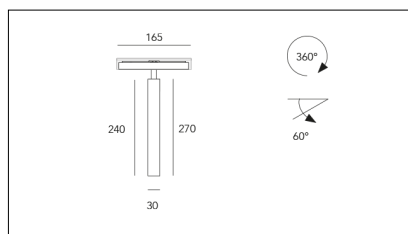
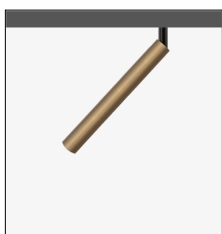
MACROLUX



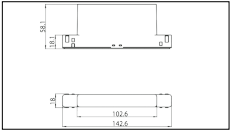
Codice Articolo	Articolo	Colore	Emissione (°)	Temperatura Luce (°K)	Potenza (W)
1912.1240.00.2	SLIM TRACK/48V-2 5.5W 150mA 26°	Nero (2)	26	3000	5.5
1912.1240.00.2700.2	*SLIM TRACK	Nero (2)	26	2700	5.5
1912.1240.00.4000.2	*SLIM TRACK	Nero (2)	26	4000	5.5
1912.1240.03.2	SLIM TRACK/48V-2 5.5W 150mA 26° DALI	Nero (2)	26	3000	5.5
1912.1240.03.2700.2	*SLIM TRACK	Nero (2)	26	2700	5.5
1912.1240.03.4000.2	*SLIM TRACK	Nero (2)	26	4000	5.5



Codice Articolo	Articolo	Colore	Emissione (°)	Temperatura Luce (°K)	Potenza (W)
1912.1240.00.2700.4	*SLIM TRACK	Bianco (4)	26	2700	5.5
1912.1240.00.4	SLIM TRACK/48V-4 5.5W 150mA 26°	Bianco (4)	26	3000	5.5
1912.1240.00.4000.4	*SLIM TRACK	Bianco (4)	26	4000	5.5
1912.1240.03.2700.4	SLIM TRACK/48V-4 5.5W 150mA 26° 2700°K DALI	Bianco (4)	26	2700	5.5
1912.1240.03.4	*SLIM TRACK	Bianco (4)	26	3000	5.5
1912.1240.03.4000.4	*SLIM TRACK	Bianco (4)	26	4000	5.5



Codice Articolo	Articolo	Colore	Emissione (°)	Temperatura Luce (°K)	Potenza (W)
1912.1240.00.2700.96	*SLIM TRACK	Bronzo (96)	26	2700	5.5
1912.1240.00.4000.96	*SLIM TRACK	Bronzo (96)	26	4000	5.5
1912.1240.00.96	SLIM TRACK/48V-96 5.5W 150mA 26°	Bronzo (96)	26	3000	5.5
1912.1240.03.2700.96	*SLIM TRACK	Bronzo (96)	26	2700	5.5
1912.1240.03.4000.96	*SLIM TRACK	Bronzo (96)	26	4000	5.5
1912.1240.03.96	SLIM TRACK/48V-96 5.5W 150mA 26° DALI	Bronzo (96)	26	3000	5.5



Codice Articolo	Nome	Descrizione	Colore	Tipo di Driver	Potenza (W)
1.1200EN1812	DALIGATE 48V CASAMBI - Box Nero	Interfaccia Bluetooth-DALI compatibile con sistemi Bluetooth CASAMBI - Consumo 8W	Nero (2)	CASAMBI	8