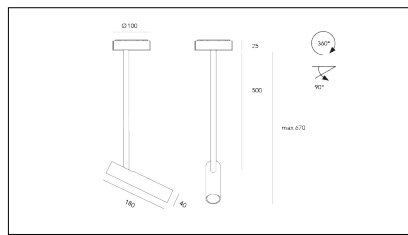
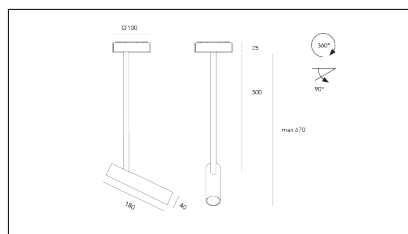


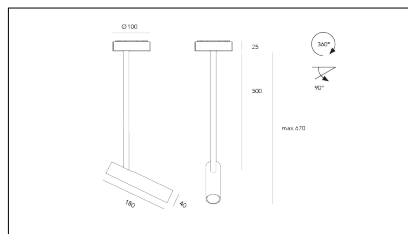
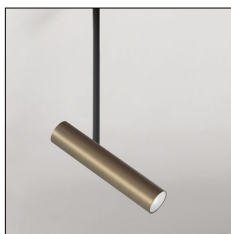
MACROLUX



Article code	Article	Colour	Beam angle (°)	Light Temperature (°K)	Watt (W)	Type of recessed	Size (mm)
1215.2230.30.2	Lotus ceiling 500/1000 /30/3000-2#	Black (2)	30	3000	8.3	Plasterboard	500
1215.2230.30.2700.2	Lotus ceiling 500/1000 /30/2700-2#	Black (2)	30	2700	8.3	Plasterboard	500
1215.2230.30.4000.2	Lotus ceiling 500/1000 /30/4000-2#	Black (2)	30	4000	8.3	Plasterboard	500
1215.2230.40.2	Lotus ceiling 500/1000 /40/3000-2#	Black (2)	40	3000	8.3	Plasterboard	500
1215.2230.40.2700.2	Lotus ceiling 500/1000 /40/2700-2#	Black (2)	40	2700	8.3	Plasterboard	500
1215.2230.40.4000.2	Lotus ceiling 500/1000 /40/4000-2#	Black (2)	40	4000	8.3	Plasterboard	500
1215.2230.60.2	Lotus ceiling 500/1000 /60/3000-2#	Black (2)	60	3000	8.3	Plasterboard	500
1215.2230.60.2700.2	Lotus ceiling 500/1000 /60/2700-2#	Black (2)	60	2700	8.3	Plasterboard	500
1215.2230.60.4000.2	Lotus ceiling 500/1000 /60/4000-2#	Black (2)	60	4000	8.3	Plasterboard	500

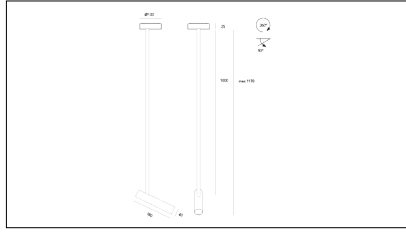


Article code	Article	Colour	Beam angle (°)	Light Temperature (°K)	Watt (W)	Type of recessed	Size (mm)
1215.2230.30.2700.4	Lotus ceiling 500/1000 /30/2700-4#	White (4)	30	2700	8.3	Plasterboard	500
1215.2230.30.4	Lotus ceiling 500/1000 /30/3000-4#	White (4)	30	3000	8.3	Plasterboard	500
1215.2230.30.4000.4	Lotus ceiling 500/1000 /30/4000-4#	White (4)	30	4000	8.3	Plasterboard	500
1215.2230.40.2700.4	Lotus ceiling 500/1000 /40/2700-4#	White (4)	40	2700	8.3	Plasterboard	500
1215.2230.40.4	Lotus ceiling 500/1000 /40/3000-4#	White (4)	40	3000	8.3	Plasterboard	500
1215.2230.40.4000.4	Lotus ceiling 500/1000 /40/4000-4#	White (4)	40	4000	8.3	Plasterboard	500
1215.2230.60.2700.4	Lotus ceiling 500/1000 /60/2700-4#	White (4)	60	2700	8.3	Plasterboard	500
1215.2230.60.4	Lotus ceiling 500/1000 /60/3000-4#	White (4)	60	3000	8.3	Plasterboard	500
1215.2230.60.4000.4	Lotus ceiling 500/1000 /60/4000-4#	White (4)	60	4000	8.3	Plasterboard	500

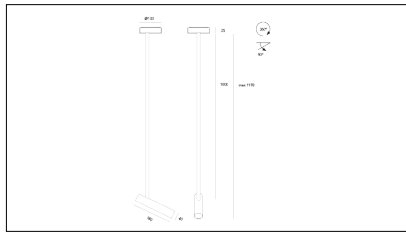


Article code	Article	Colour	Beam angle (°)	Light Temperature (°K)	Watt (W)	Type of recessed	Size (mm)
1215.2230.30.2700.96	Lotus ceiling 500/1000 /30/2700-96#	Bronze (96)	30	2700	8.3	Plasterboard	500
1215.2230.30.4000.96	Lotus ceiling 500/1000 /30/4000-96#	Bronze (96)	30	4000	8.3	Plasterboard	500
1215.2230.30.96	Lotus ceiling 500/1000 /30/3000-96#	Bronze (96)	30	3000	8.3	Plasterboard	500
1215.2230.40.2700.96	Lotus ceiling 500/1000 /40/2700-96#	Bronze (96)	40	2700	8.3	Plasterboard	500
1215.2230.40.4000.96	Lotus ceiling 500/1000 /40/4000-96#	Bronze (96)	40	4000	8.3	Plasterboard	500
1215.2230.40.96	Lotus ceiling 500/1000 /40/3000-96#	Bronze (96)	40	3000	8.3	Plasterboard	500
1215.2230.60.2700.96	Lotus ceiling 500/1000 /60/2700-96#	Bronze (96)	60	2700	8.3	Plasterboard	500
1215.2230.60.4000.96	Lotus ceiling 500/1000 /60/4000-96#	Bronze (96)	60	4000	8.3	Plasterboard	500

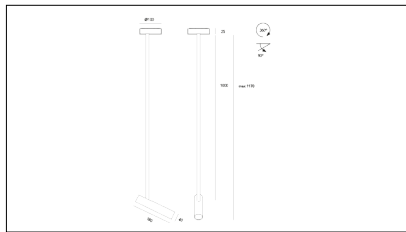
Article code	Article	Colour	Beam angle (°)	Light Temperature (°K)	Watt (W)	Type of recessed	Size (mm)
1215.2230.60.96	Lotus ceiling 500/1000 /60/3000-96#	Bronze (96)	60	3000	8.3	Plasterboard	500



Article code	Article	Colour	Beam angle (°)	Light Temperature (°K)	Watt (W)	Size (mm)	Type of recessed
1215.3230.30.2	Lotus ceiling 500/1000 /30/3000-2#	Black (2)	30	3000	8.3	1000	Plasterboard
1215.3230.30.2700.2	Lotus ceiling 500/1000 /30/2700-2#	Black (2)	30	2700	8.3	1000	Plasterboard
1215.3230.30.4000.2	Lotus ceiling 500/1000 /30/4000-2#	Black (2)	30	4000	8.3	1000	Plasterboard
1215.3230.40.2	Lotus ceiling 500/1000 /40/3000-2#	Black (2)	40	3000	8.3	1000	Plasterboard
1215.3230.40.2700.2	Lotus ceiling 500/1000 /40/2700-2#	Black (2)	40	2700	8.3	1000	Plasterboard
1215.3230.40.4000.2	Lotus ceiling 500/1000 /40/4000-2#	Black (2)	40	4000	8.3	1000	Plasterboard
1215.3230.60.2	Lotus ceiling 500/1000 /60/3000-2#	Black (2)	60	3000	8.3	1000	Plasterboard
1215.3230.60.2700.2	Lotus ceiling 500/1000 /60/2700-2#	Black (2)	60	2700	8.3	1000	Plasterboard
1215.3230.60.4000.2	Lotus ceiling 500/1000 /60/4000-2#	Black (2)	60	4000	8.3	1000	Plasterboard

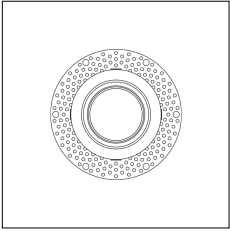


Article code	Article	Colour	Beam angle (°)	Light Temperature (°K)	Watt (W)	Size (mm)	Type of recessed
1215.3230.30.2700.4	Lotus ceiling 500/1000 /30/2700-4#	White (4)	30	2700	8.3	1000	Plasterboard
1215.3230.30.4	Lotus ceiling 500/1000 /30/3000-4#	White (4)	30	3000	8.3	1000	Plasterboard
1215.3230.30.4000.4	Lotus ceiling 500/1000 /30/4000-4#	White (4)	30	4000	8.3	1000	Plasterboard
1215.3230.40.2700.4	Lotus ceiling 500/1000 /40/2700-4#	White (4)	40	2700	8.3	1000	Plasterboard
1215.3230.40.4	Lotus ceiling 500/1000 /40/3000-4#	White (4)	40	3000	8.3	1000	Plasterboard
1215.3230.40.4000.4	Lotus ceiling 500/1000 /40/4000-4#	White (4)	40	4000	8.3	1000	Plasterboard
1215.3230.60.2700.4	Lotus ceiling 500/1000 /60/2700-4#	White (4)	60	2700	8.3	1000	Plasterboard
1215.3230.60.4	Lotus ceiling 500/1000 /60/3000-4#	White (4)	60	3000	8.3	1000	Plasterboard
1215.3230.60.4000.4	Lotus ceiling 500/1000 /60/4000-4#	White (4)	60	4000	8.3	1000	Plasterboard



Article code	Article	Colour	Beam angle (°)	Light Temperature (°K)	Watt (W)	Size (mm)	Type of recessed
1215.3230.30.2700.96	Lotus ceiling 500/1000 /30/2700-96#	Bronze (96)	30	2700	8.3	1000	Plasterboard
1215.3230.30.4000.96	Lotus ceiling 500/1000 /30/4000-96#	Bronze (96)	30	4000	8.3	1000	Plasterboard

Article code	Article	Colour	Beam angle (°)	Light Temperature (°K)	Watt (W)	Size (mm)	Type of recessed
1215.3230.30.96	Lotus ceiling 500/1000 /30/3000-96#	Bronze (96)	30	3000	8.3	1000	Plasterboard
1215.3230.40.2700.96	Lotus ceiling 500/1000 /40/2700-96#	Bronze (96)	40	2700	8.3	1000	Plasterboard
1215.3230.40.4000.96	Lotus ceiling 500/1000 /40/4000-96#	Bronze (96)	40	4000	8.3	1000	Plasterboard
1215.3230.40.96	Lotus ceiling 500/1000 /40/3000-96#	Bronze (96)	40	3000	8.3	1000	Plasterboard
1215.3230.60.2700.96	Lotus ceiling 500/1000 /60/2700-96#	Bronze (96)	60	2700	8.3	1000	Plasterboard
1215.3230.60.4000.96	Lotus ceiling 500/1000 /60/4000-96#	Bronze (96)	60	4000	8.3	1000	Plasterboard
1215.3230.60.96	Lotus ceiling 500/1000 /60/3000-96#	Bronze (96)	60	3000	8.3	1000	Plasterboard



Article code	Name	Description
18.1002.PK	RF70/PK	Plaster kit per proiettore ad incasso RF70